

TA222967

FIGURE 17. HUB AND DRUM ASSEMBLY.

Current part is item (14,12) on diagram. Available at [www.oshkoshequipment.com](http://www.oshkoshequipment.com)

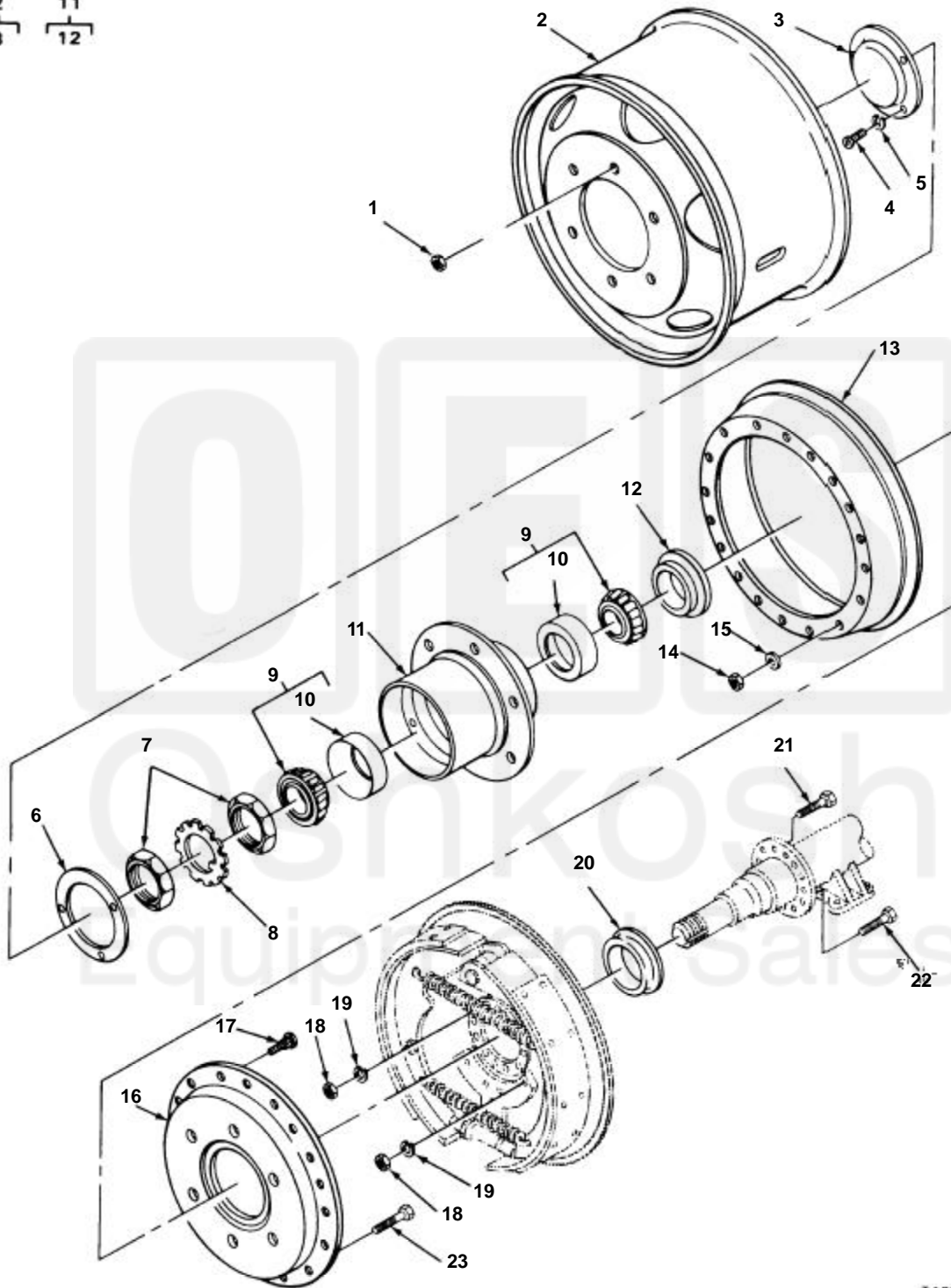
| SECTION II<br>(1)<br>ITEM<br>NO | (2)<br>SMR<br>CODE | (3)<br>FSCM | TM9-2330-205-14&P<br>(4)<br>PART<br>NUMBER | (5)<br>DESCRIPTION AND USABLE ON CODE (UOC) | (6)<br>QTY |
|---------------------------------|--------------------|-------------|--|---|------------|
| GROUP 13 WHEELS, HUBS AND DRUMS |                    |             |  |   |            |
| 1311 WHEELS, HUBS AND DRUMS     |                    |             |  |   |            |
| FIG. 17. HUB AND DRUM ASSEMBLY  |                    |             |  |   |            |
| 1                               | PAOZZ              | 96906       | MS51983-4                                  | NUT,PLAIN,SINGLE BA RIGHT HAND              | 6          |
| 1                               | PAOZZ              | 96906       | MS51983-3                                  | NUT,PLAIN,SINGLE BA LEFT HAND               | 6          |
| 2                               | PAOZZ              | 96906       | MS53044-5                                  | WHEEL,PNEUMATIC TIR                         | 4          |
| 3                               | PAOZZ              | 96906       | MS53045-3                                  | RING,SIDE,AUTOMOTIV                         | 1          |
| 4                               | PAOZZ              | 96906       | MS53068-1                                  | NUT,CAP,DUAL WHEEL                          | 6          |
| 4                               | PAOZZ              | 96906       | MS53068-2                                  | NUT,CAP,DUAL WHEEL RIGHT HAND               | 6          |
| 5                               | PAOZZ              | 19204       | 6144454                                    | CAP   | 2          |
| 6                               | PAOZZ              | 96906       | MS35206-279                                | SCREW,MACHINE                               | 6          |
| 7                               | PAOZZ              | 96906       | MS35338-44                                 | WASHER,LOCK                                 | 6          |
| 8                               | PAOZZ              | 19207       | 10910885                                   | GASKET                                      | 1          |
| 9                               | PAOZZ              | 19207       | 7411379                                    | NUT,PLAIN,OCTAGON                           | 4          |
| 10                              | PAOZZ              | 19207       | 7411378                                    | WASHER,KEY                                  | 2          |
| 11                              | PAOZZ              | 96906       | MS19081-112                                | BEARING,ROLLER,TAPE                         | 4          |
| 12                              | PAOZZ              | 19207       | 7411377                                    | CUP,TAPERED ROLLER                          | 1          |
| 13                              | PAOZZ              | 19207       | 7263712                                    | HUB,BODY                                    | 2          |
| 14                              | PAOZZ              | 19207       | 7411429                                    | SEAL,PLAIN ENCASED                          | 2          |
| 15                              | PAOZZ              | 24617       | 2284031                                    | BRAKE DRUM                                  | 2          |
| 16                              | PAOZZ              | 09386       | 67428E2                                    | NUT,SELF,LOCKING,HE                         | 36         |
| 17                              | PAOZZ              | 96906       | MS27183-14                                 | WASHER,FLAT                                 | 36         |
| 18                              | PAOZZ              | 19207       | 7413231                                    | BACK FRONT BRAKE DR                         | 2          |
| 19                              | PAOZZ              | 96906       | MS51946-1                                  | BOLT,RIBBED SHOULDE LEFT HAND               | 6          |
| 19                              | PAOZZ              | 96906       | MS51946-2                                  | BOLT,RIBBED SHOULDE RIGHT HAND              | 6          |
| 20                              | PAOZZ              | 96906       | MS51968-8                                  | NUT,PLAIN,HEXAGON                           | 24         |
| 21                              | PAOZZ              | 96906       | MS35335-35                                 | WASHER,LOCK                                 | 24         |
| 22                              | PAOZZ              | 23862       | 2275698                                    | SPACER,SLEEVE HUB INNER OIL SEAL            | 2          |
| 23                              | PAOZZ              | 96906       | MS90726-60                                 | SCREW,CAP,HEXAGON H                         | 8          |
| 24                              | PAOZZ              | 96906       | MS90727-64                                 | SCREW,CAP,HEXAGON H                         | 16         |
| 25                              | PFOZZ              | 18876       | 8720025                                    | BOLT,RIBBED NECK                            | 36         |

END OF FIGURE

Current part is item (14,12) on diagram. Available at [www.oshkoshequipment.com](http://www.oshkoshequipment.com)

TM9-2330-205-14&P

$\frac{2}{3}$      $\frac{11}{12}$



TA222967

FIGURE 17A. HUB AND DRUM ASSEMBLY  
FOR USE WITH SUPER SINGLE STYLE

Change 2

| SECTION II |          | TM9-2330-205-14&P |             |                                      |     |  |
|------------|----------|-------------------|-------------|--------------------------------------|-----|--|
| (1)        | (2)      | (3)               | (4)         | (5)                                  | (6) |  |
| ITEM NO    | SMR CODE | FSCM              | PART NUMBER | DESCRIPTION AND USABLE ON CODE (UOC) | QTY |  |
|            |          |                   |             | GROUP 13 WHEELS, HUBS AND DRUMS      |     |  |
|            |          |                   |             | 1311 WHEELS, HUBS AND DRUMS          |     |  |
|            |          |                   |             | FIG. 17. HUB AND DRUM ASSEMBLY       |     |  |
| 1          | PAOZZ    | 02686             | 129378      | NUT,WHEEL,FLANGED,RIGHT HAND         | 12  |  |
| 2          | PAOZZ    | 7J015             | 1050110     | WHEEL,PNEUMATIC TIR                  | 2   |  |
| 3          | PAOZZ    | 19204             | 6144454     | CAP                                  | 2   |  |
| 4          | PAOZZ    | 96906             | MS35206-279 | SCREW,MACHINE                        | 6   |  |
| 5          | PAOZZ    | 96906             | MS35338-44  | WASHER,LOCK                          | 6   |  |
| 6          | PAOZZ    | 19207             | 10910885    | GASKET                               | 1   |  |
| 7          | PAOZZ    | 19207             | 7411379     | NUT,PLAIN,OCTAGON                    | 4   |  |
| 8          | PAOZZ    | 19207             | 7411378     | WASHER,KEY                           | 2   |  |
| 9          | PAOZZ    | 96906             | MS19081-112 | BEARING,ROLLER,TAPE                  | 4   |  |
| 10         | PAOZZ    | 19207             | 7411377     | .CUP,TAPERED ROLLER                  | 1   |  |
| 11         | PAOZZ    | 19207             | 11682127-1  | HUB,BODY                             | 2   |  |
| 12         | PAOZZ    | 19207             | 7411429     | SEAL,PLAIN ENCASED                   | 2   |  |
| 13         | PAOZZ    | 24617             | 2284031     | BRAKE DRUM                           | 2   |  |
| 14         | PAOZZ    | 09386             | 67428E2     | NUT,SELF,LOCKING,HE                  | 36  |  |
| 15         | PAOZZ    | 96906             | MS27183-14  | WASHER,FLAT                          | 36  |  |
| 16         | PAOZZ    | 19207             | 7413231     | BACK FRONT BRAKE DR                  | 2   |  |
| 17         | PAOZZ    | 7J015             | MS51946-2   | BOLT,RIBBED SHOULDER,<br>RIGHT HAND  | 12  |  |
| 18         | PAOZZ    | 96906             | MS51968-8   | NUT,PLAIN,HEXAGON                    | 24  |  |
| 19         | PAOZZ    | 96906             | MS35335-35  | WASHER,LOCK                          | 24  |  |
| 20         | PAOZZ    | 23862             | 2275698     | SPACER,SLEEVE HUB<br>INNER OIL SEAL  | 2   |  |
| 21         | PAOZZ    | 96906             | MS90726-60  | SCREW,CAP,HEXAGON H                  | 8   |  |
| 22         | PAOZZ    | 96906             | MS90727-64  | SCREW,CAP,HEXAGON H                  | 16  |  |
| 23         | PFOZZ    | 18876             | 8720025     | BOLT,RIBBED NECK                     | 36  |  |

END OF FIGURE



FOR USE WITH SUPER SINGLE STYLE

17-1A

Change 2